

Introducing SIMPLANT® 16 the key to unlocking digital potential



Immediate
individualized
temporization
in one single
surgical visit

When featuring an ATLANTIS Abutment, the Immediate Smile concept combines the proven benefits of SIMPLANT guided surgery and ATLANTIS beyond CAD/CAM patient-specific design into a solution that delivers considerable clinical and patient value.

Perfect conditions for individualized esthetics and healthy soft tissue.

The SIMPLANT Guide and the ATLANTIS Abutment in titanium, gold-shaded titanium or zirconia are delivered at implant installation, together with the temporary crown.

This allows for immediate individualized temporization, even at time of tooth extraction – in a single surgical visit.

Minimal switch of components interfacing with the implant.

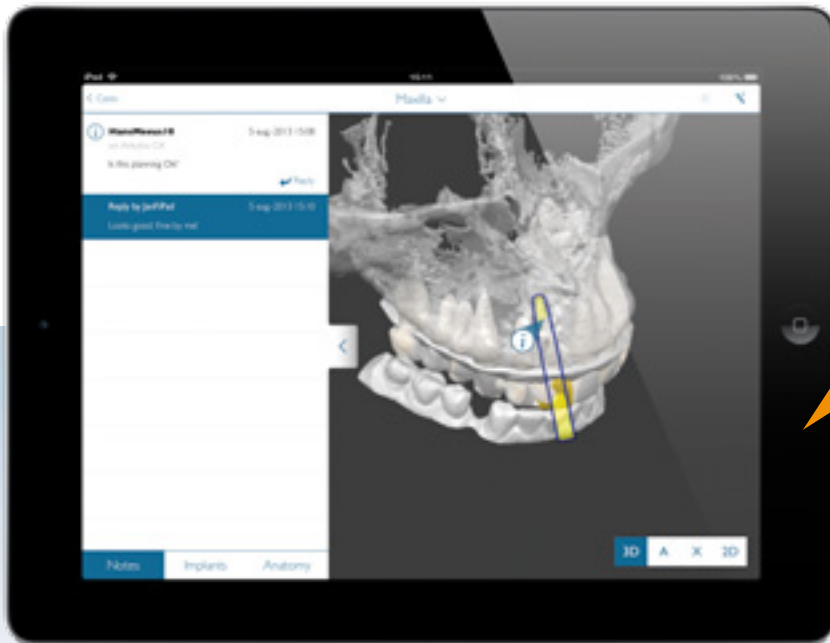
When a natural healing is obtained, the clinician can choose to keep the initial ATLANTIS Abutment for the final restoration. An abutment level impression or intraoral scan is made to proceed with the final crown restoration.

Reinforce digital communication between clinician, laboratory and production facilities for SIMPLANT® and ATLANTIS™.

The SIMPLANT Guide and ATLANTIS Abutment order can be placed through the SIMPLANT Online Shop. The order also includes the ATLANTIS Abutment Core File. No shipping of models is required when the intraoral scan or lab-based scan(s) are available in the SIMPLANT treatment plan.

And it enables a faster and convenient workflow at the laboratory, when the ATLANTIS Abutment Core File can be used to CAD/CAM design and manufacture the temporary crown, before receipt of the abutment and before implant placement.

Introducing SIMPLANT® 16 the key to unlocking digital potential



Choose Team-Up!
for easy and
secure team
communication on
your SIMPLANT®
cases



The Team-Up! app by SIMPLANT facilitates the team communication on SIMPLANT cases and is a great communication tool for your patients to convince them of the dental implant treatment plan. This application for iPad® not only allows to share and view SIMPLANT cases but also to communicate about them.

Implant surgeons can now easily team-up with their referring dentists, labs or colleagues to discuss an implant planning case, all of this in the safe environment of the SIMPLANT cloud.

Advantages of SIMPLANT® Team-Up!:

- Easy SIMPLANT case communication through case sharing and synchronous exchange of notes between SIMPLANT software and the app, enabled by the safe SIMPLANT Cloud.
- Great views of case data through 3D and 2D images: 3D view, panoramic, axial and cross-sectional views.
- A pleasant user-interface providing a clear overview of the implants with intuitive localization.

SIMPLANT® 16 guides you from prosthetic planning to implant-based restorations.

With the open and flexible import interfaces in SIMPLANT, the clinician can have soft tissue and tooth setup information available for any type of case, prior to planning.

